

# MONTHLY MEMBERSHIP PROGRESS REPORT

LOCATION NEBRASKA

District 38 O

Results as of: 6/30/2022

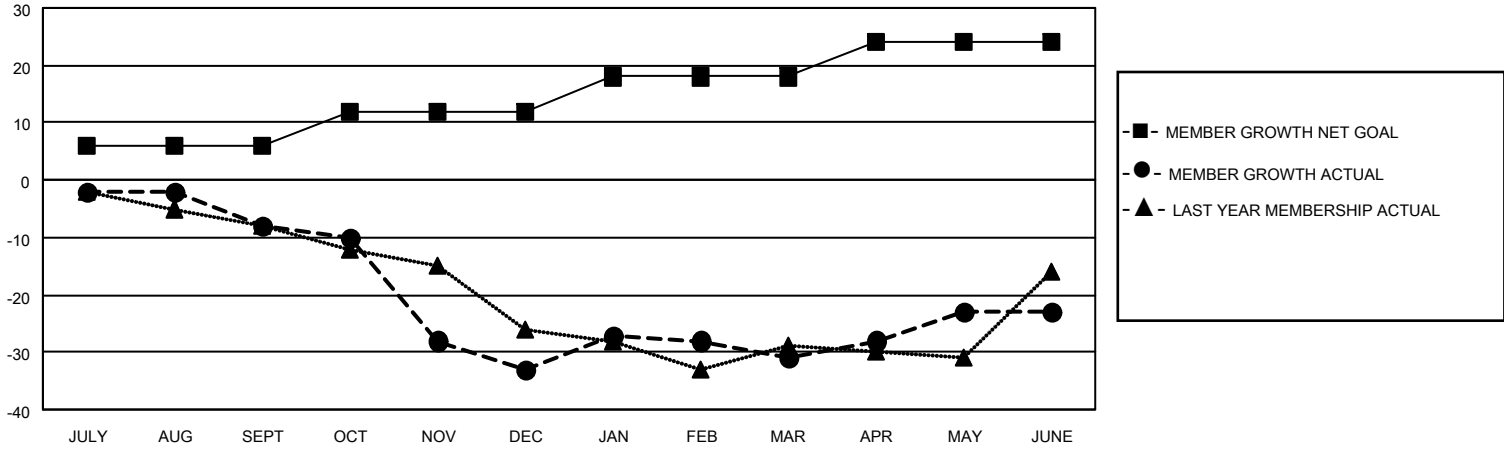
Clubs			
RESULTS FOR 2021-2022			
QUARTER	NEW CLUB GOAL	NEW CLUBS	DROPPED CLUBS
JULY/AUG/SEPT	0	0	0
OCT/NOV/DEC	0	0	0
JAN/FEB/MAR	0	0	0
APR/MAY/JUNE	1	0	0

Members			
RESULTS FOR 2021-2022			
QUARTER	MEMBER GROWTH NET GOAL	MEMBER GROWTH ACTUAL	DROPPED MEMBERS ACTUAL (including transfers)
JULY/AUG/SEPT	6	15	22
OCT/NOV/DEC	6	6	30
JAN/FEB/MAR	6	12	9
APR/MAY/JUNE	6	18	10

**GOALS AND ACTUAL NEW CLUBS CUMULATIVE**



**GOALS AND ACTUAL MEMBERS CUMULATIVE**



DROPPED CLUBS: 0	
<b>DROPPED MEMBERS</b>	
DECEASED	13
CLUB CANCELLED	0
OTHER	58
<b>TOTAL</b>	<b>71</b>

12 CLUBS OF 24 ADDED 1 OR MORE NEW MEMBERS

[CLICK HERE FOR CUMULATIVE MEMBERSHIP DATA](#)

<u>GENDER DISTRIBUTION</u>	
MALE	570 (76.20%)
FEMALE	178 (23.80%)
NON BINARY	0 (0.00%)
PREFER NOT TO ANSWER	0 (0.00%)
<b>TOTAL FAMILY UNIT MEMBERS</b>	<b>128</b>
<b>FAMILY MEMBERS PAYING HALF DUES</b>	<b>65</b>